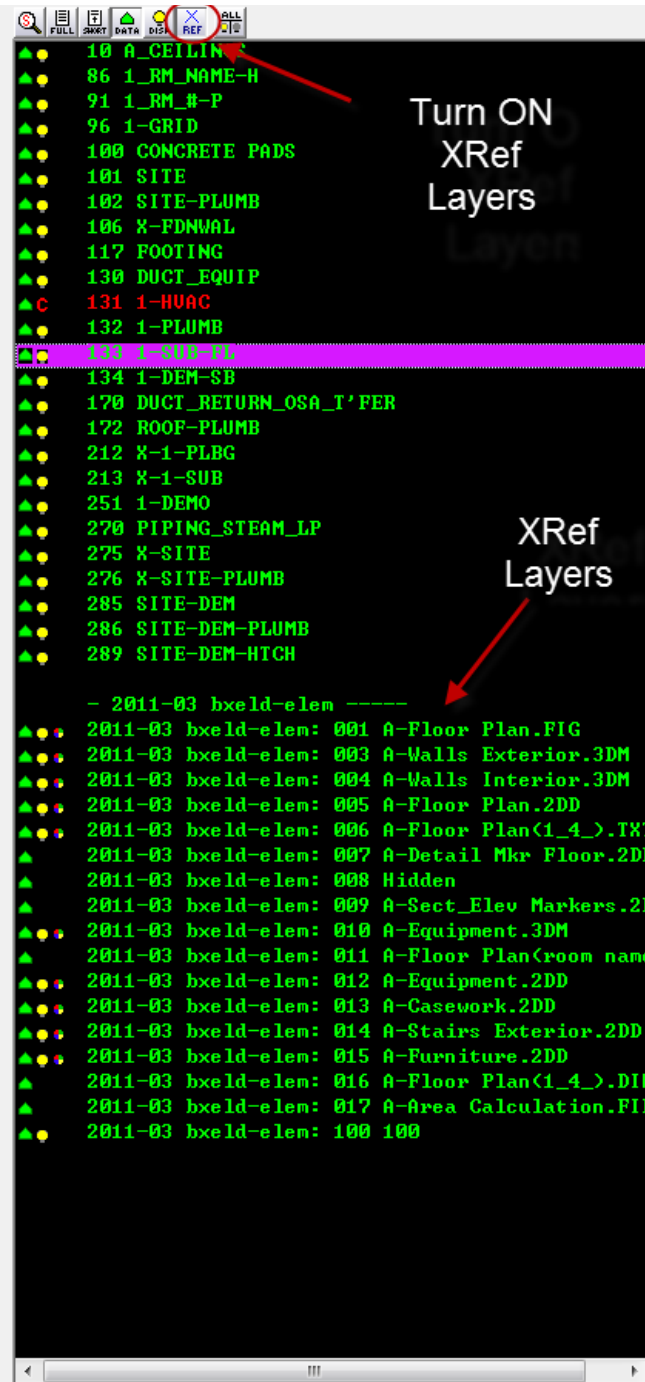


What's new in General CADD Pro v10

Updated: 02/02/2012

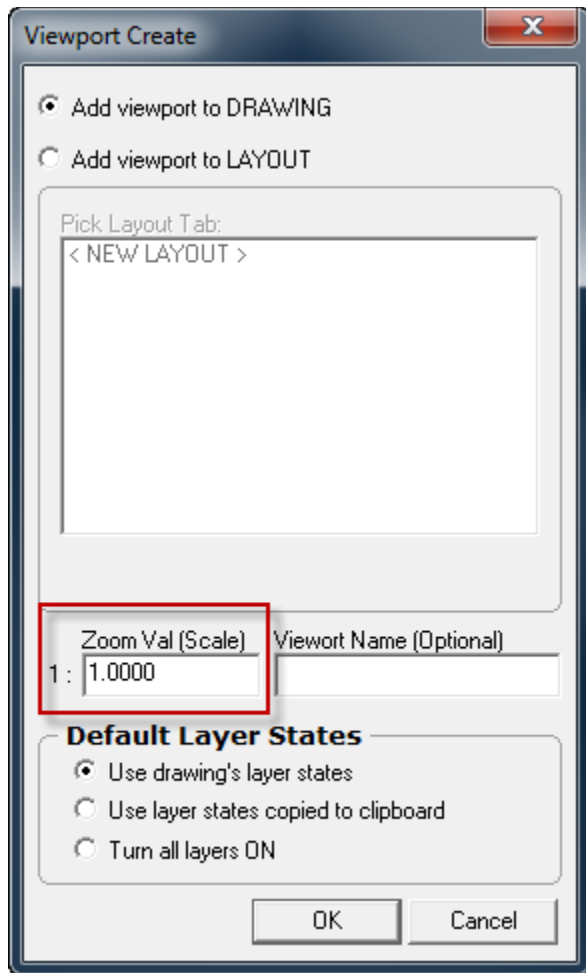
XREF enhancements

- Layer states and properties controlled through the Viewport
- Open XRef by shift+right click menu into another instance of GCP
- After and edit XRef will automatically reload the XRef file and display the changes
- XRef layers show and can be controlled via the YD command. See new button in side layers toolbar



Viewport enhancements

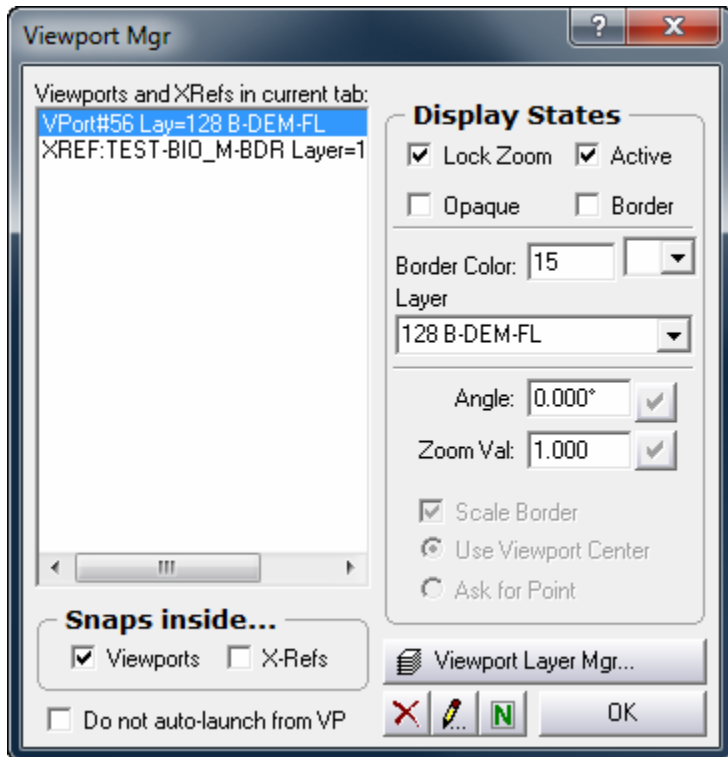
- ED Editing a Viewport using the ED command temporarily assigns layer properties and states to the model tab. Clicking back on the layer tab restores it.
- AQ/MaintainSeparateLayoutLayers now Layout Tabs keep their own layer states separate from the model layers
- VP border type "[S]elect boundary" changed to "or select [B]oundary" - allow 'S' for snap commands
- VP - you can set the scale before placement. This will scale the border. You are also now asked for a reference point, helps tremendously during placement.



- AQ/MaintainSeparateLayoutLayers now Layout Tabs keep their layer states separate from the model tab when this is checked.

Viewport Manager Enhancements:

- Set zoom value and angle from within this dialog. The extra dialog has been removed.
- The viewport layer mgr now controls the layers of the XRef referenced by the Viewport.

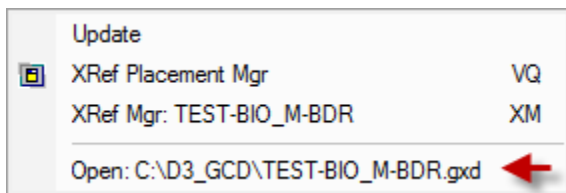


Bing Maps resolution vastly improved

- GM Geo Map gives you much better resolution
- Much faster navigation with updated tools
- Resize Image before downloading using stretch handles
- Right Click menu for Panning and Zooming commands
- Remembers previous locations in the address field
- Set image resolution via a slider bar.



Shift+Rclick on an XRef and pick item to open the XRef drawing in another instance of GCP



- Once the XRef drawing is saved, the XRef in the drawing will automatically update on the next Redraw.

Assign macros to function keys via a macro

- The macro **MA,F2=RE,0,0,10,10,ZA;** will the macro following the = to F2.
- All function key combinations can be assigned macros this way. MA,ShiftF2=ZA;

DP Batch Print Layout tabs

- Control the individual print settings for each layout tab. Uses a new Batch Print interface for setting individual print settings, or applying a change to all tabs. DP,B available when layout drawings loaded.
- Dialog docked to the right side allowing plenty of room to see the print preview.

Layout Print Options

Use Printer Setting File
CANDON 825 - D3+20 - 24x36 BOND DRAFT

Use Color Map Order All to Black
D3+20

Override Printer Device
CutePDF Writer

Fit Rotate 90
 Scale: 1 : 199.637 Always Center
LWM: 1.000 Stamp

Global to All Tabs

Copies: 1 Collate
 Print To File Print Reversed Tab Order
 White Background PDF Multi-page document
 PDF Save as Dialog

Select Layouts

TEST-BID_M-
M1-1
M1-2
M1-3
M2-1
M2-2
M2-3
M3-1
M3-2
M3-3
E
E1
E2

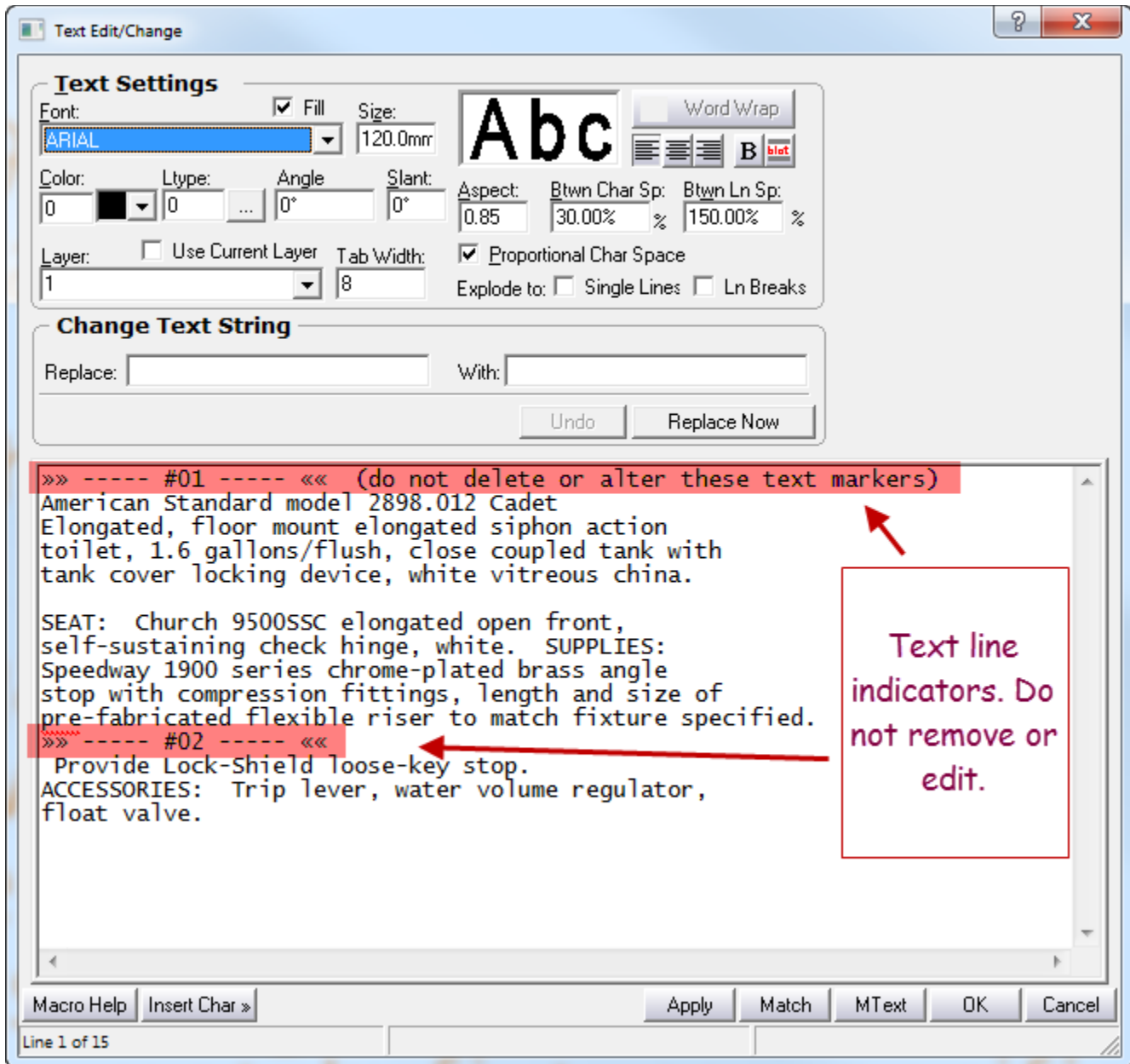
Print Layouts

Print Selected

Auto-Preview Apply to Layouts Apply

Text Change (TG) has Find/Replace and edit text options:

- The text strings can be edited. (but be careful not to alter indicator lines)
- Find and Replace options
- Undo changes made by Replace. Reverts back to original text



Find Text (FX) with Find/Replace:

- The text matching the search text highlights
- Replace and Replace All options
- Use wildcards * and ? for advanced find and replace
- It is a selection command

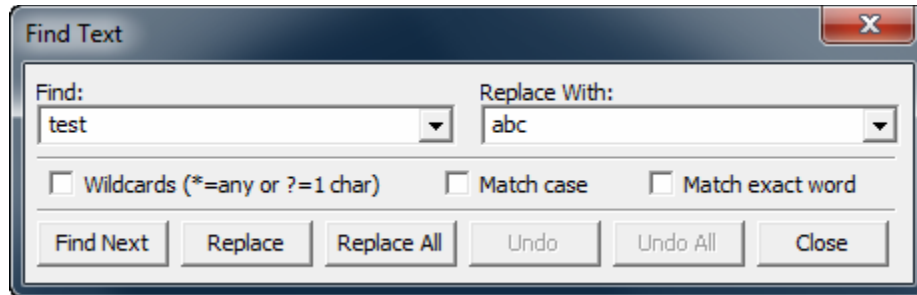
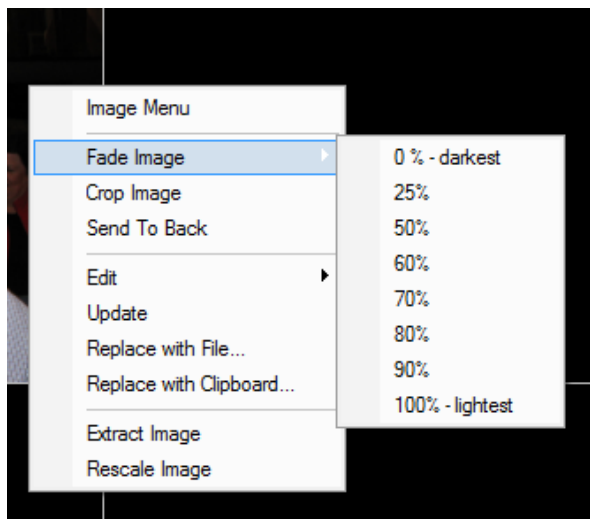


Image Menu commands:

- More Fade Image options
- Fades to background color for better results
- To Back added
- Edit and Update work much better
- Extract Image and save to a world file. See checkbox in the Save File dialog
-



JN Selection Join

The properties of the last object will be used for the new object

DQ & HS now have Settings

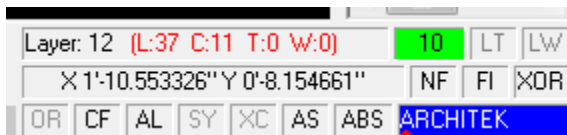
- DQ has a Load and Save button. A dims.cfg file is saved to the cfg folder. Can be used with UG Dim Change
- . Also in HG Hatch Change.

BD manual entry use .. for space

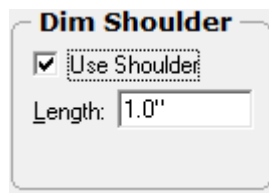
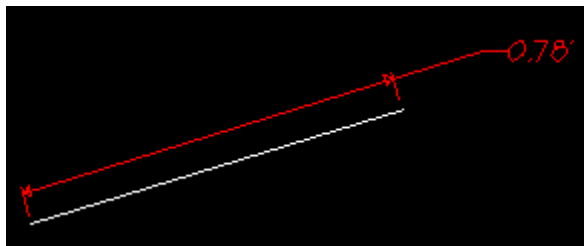
Ex: N45E..10

Auto Snap Object show properties in prompt Layer box

When Auto Snap (AS/Preview ON) finds an object, its properties are shown in the first prompt line's Layer box. **L:37** is the snap objects layer, **C:11** color, **T:0** line type, **W:0** width

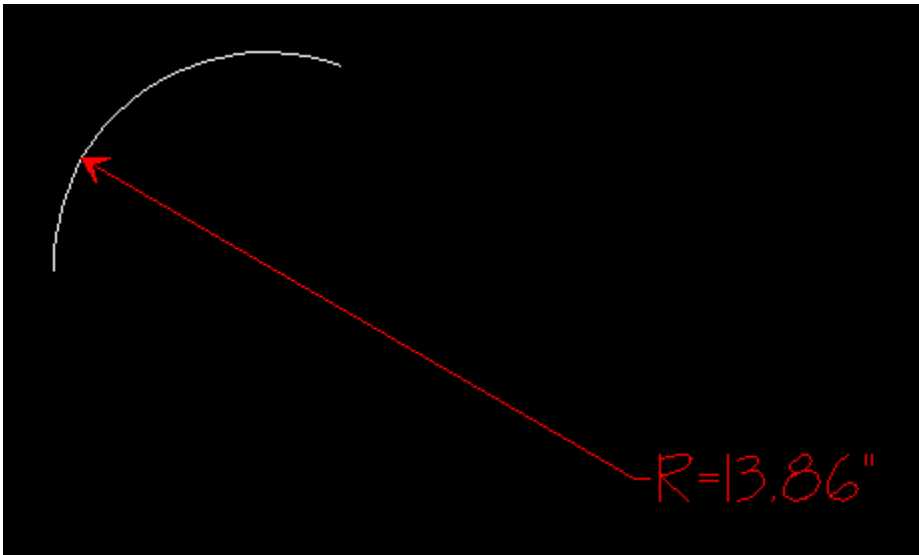


DQ New Setting for Linear Shoulder aka 'Dog Leg'



- When 'Use Shoulder' is checked, on linear aligned dimensions with horizontal text and un-centered text – a shoulder will be drawn as above next to the text.
- Length will specify the shoulder length similar to leaders.

RX Display Improvement



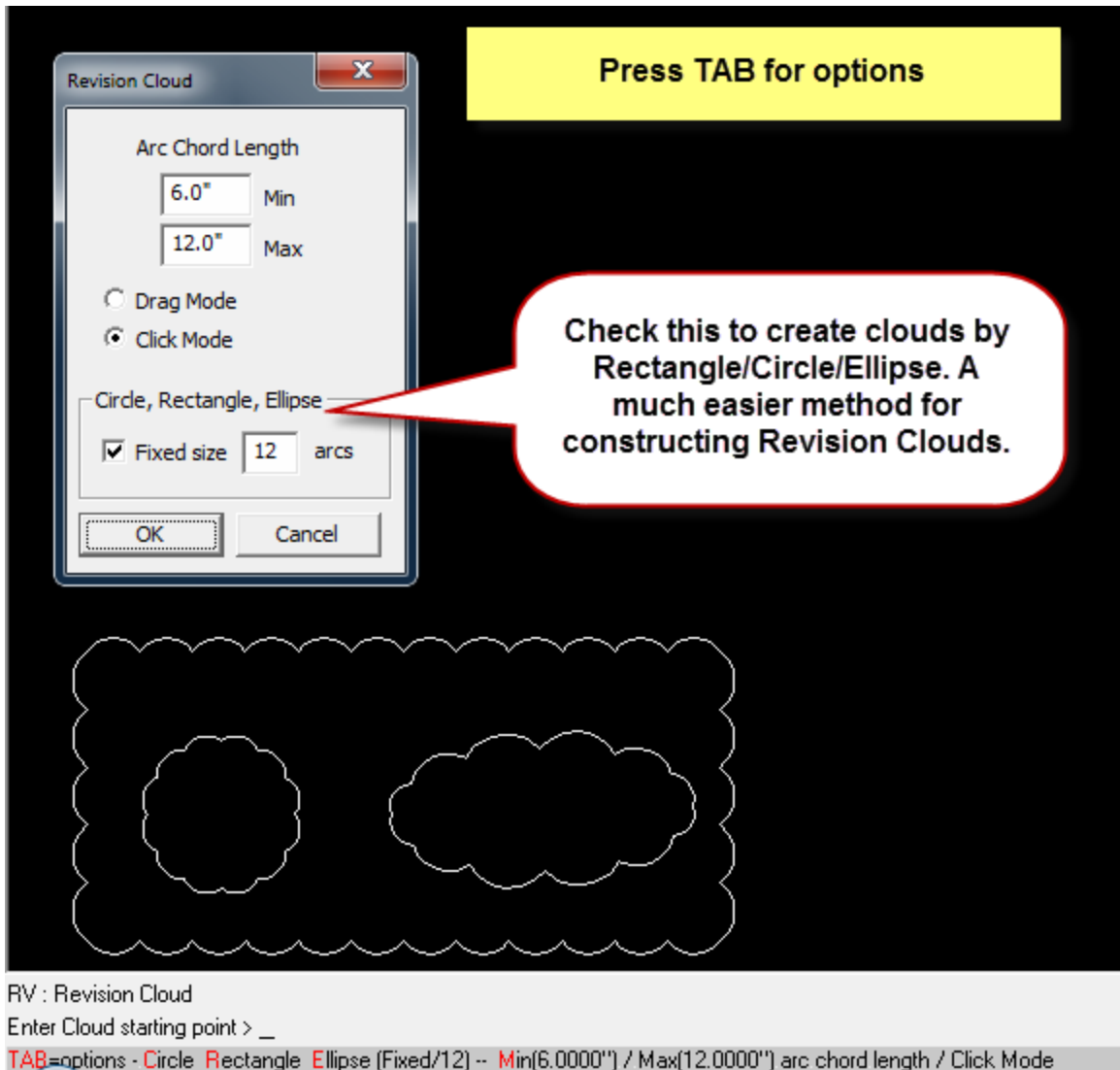
Radial dimensions pulled away from the arc will now draw the arrow to the arc itself as displayed above.

AQ/DimAngleRule

A setting for Linear Dimensions. When a linear dimension text is aligned and the dimension is vertical (90deg), the text is drawn from bottom to top. DimAngleRule angle will keep the text going in the same direction past 90 degrees, otherwise it will text will flip directions for any angle past 90.

RV – Revision Cloud defined by Circle, Rect, Ellipse

- Construct clouds by Rectangle/Circle/Ellipse.
- Press Tab for the revision cloud options. Set the number of arcs per object. For a rectangle the number of arcs is per side.



The image shows a screenshot of the 'Revision Cloud' dialog box in a software application. The dialog box has a title bar with a close button (X). It contains the following settings:

- Arc Chord Length: Min 6.0", Max 12.0"
- Drag Mode (unselected)
- Click Mode (selected)
- Circle, Rectangle, Ellipse (selected)
- Fixed size (checked) with a value of 12 arcs
- OK and Cancel buttons

A yellow callout box with a red border points to the 'Fixed size' checkbox and contains the text: "Check this to create clouds by Rectangle/Circle/Ellipse. A much easier method for constructing Revision Clouds." Above the dialog box, a yellow box contains the text: "Press TAB for options". Below the dialog box, two white revision clouds are shown on a black background: one circular and one rectangular.

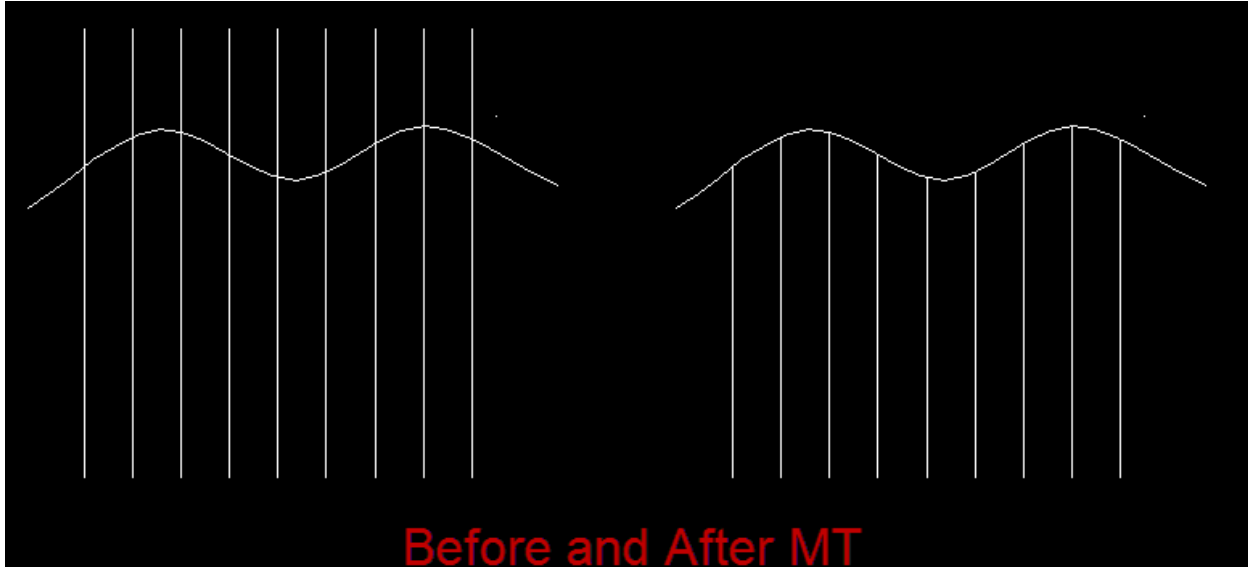
RV : Revision Cloud
Enter Cloud starting point > _
TAB=options - Circle Rectangle Ellipse (Fixed/12) -- Min(6.0000") / Max(12.0000") arc chord length / Click Mode

RV,Tab for settings dlg

EX – explodes text blocks at the line breaks

If a text block has blank lines separating text, Explode will break it down in to multi-lined text blocks before it breaks it down into individual lines. Once all the line breaks are out of the text, it will break it down to single lines.

MX/MT – Multi Trim/Extend will trim/extend to curves

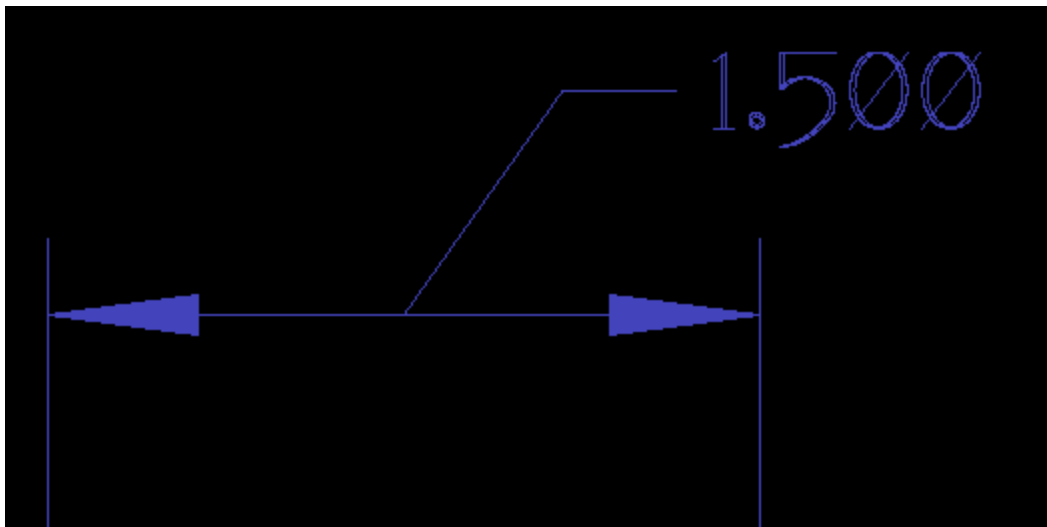


OG/WG/YG/CG – Change transfers properties to other objects

The Change commands now allow you to match the properties from one object and transfer them to other objects. In OG, when you see the prompt to change properties, click on another object. This sets the properties that will be transferred to the objects you pick. The other Change commands work a little differently but similar functionality.

UV – pull dimension text off the dimension line

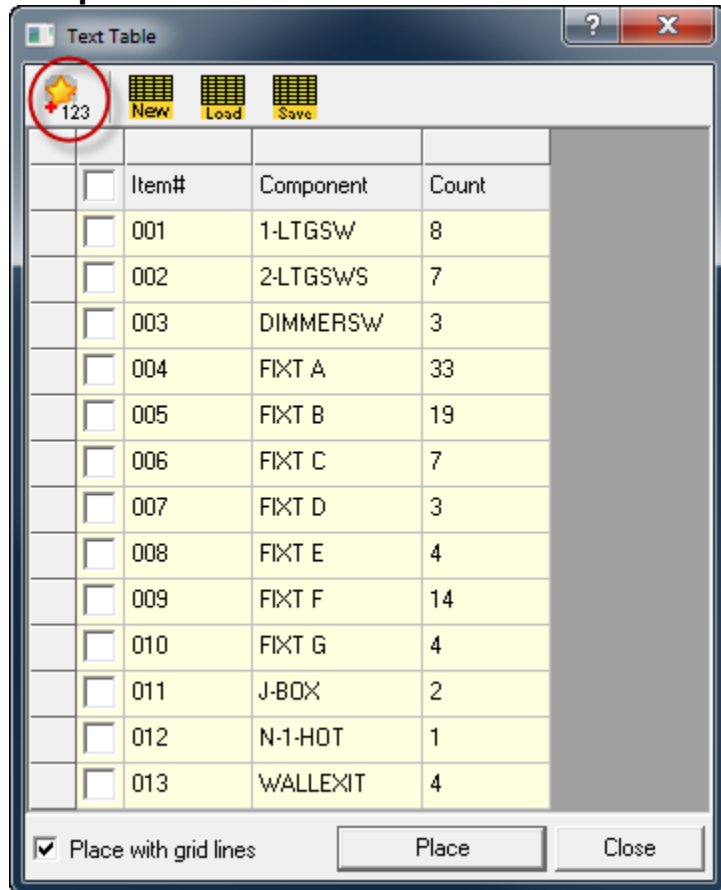
When moving dimension text, hold the Ctrl key down to move the text off the dim line. If DQ/Dim Shoulder is checked (new to V10) a leader line will be drawn to the text.



TT – Text Table / BOM Command

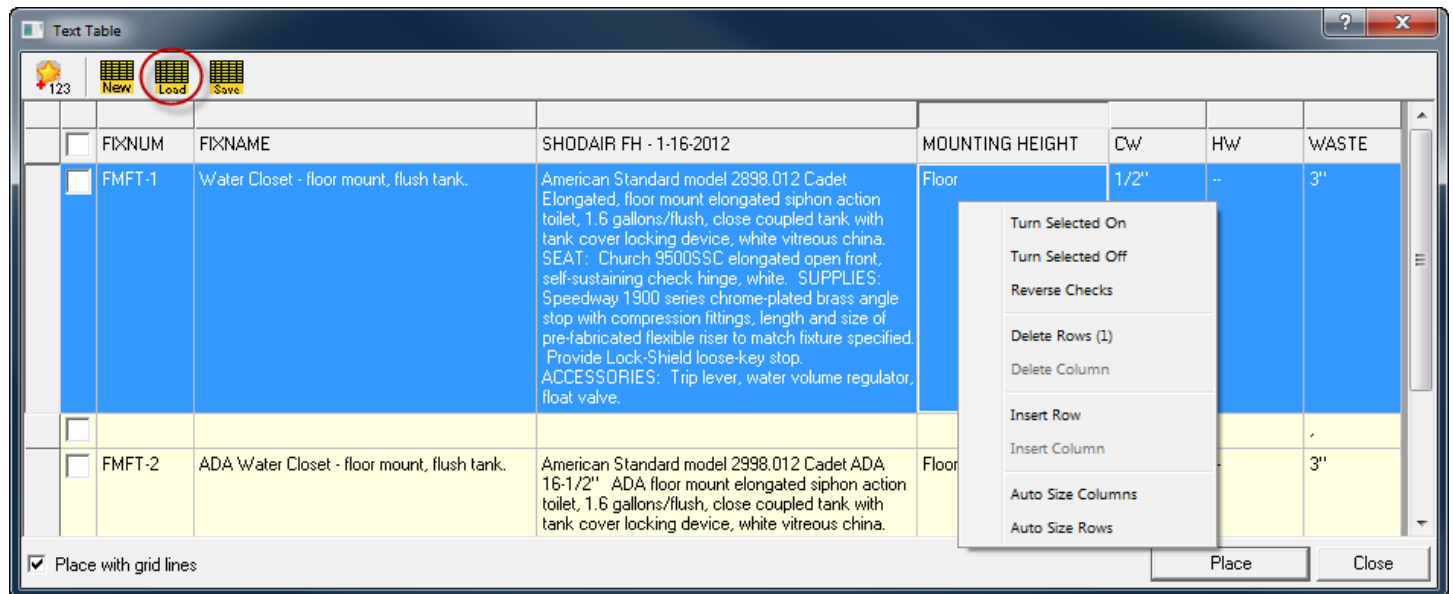
- Two table methods. By component count or load a CSV file.
- Component count method will show a list of components with their counts
- CSV (Comma Separated Values) is typically an Excel spread sheet saved as a CSV. The fields are delimited by commas.

Component count method



- Click 123 button to get the current component count
- Check the rows you want included in the table
- Rclick menu for selection and spacing commands
- Resize columns and rows

CSV method



- Resize columns and rows
- Text will word wrap
- Delete / Add columns and rows (Right Click menu commands)
- Save to a CSV file for future use.
- Click New to remove the data but keep headings.
- Edit text in-place clicking twice in a data cell

Table placed in the GCP drawing

FIXNUM	FIXNAME	SHODAIR FH - 1-16-2012	MOUNTING HEIGHT	CW	HW	WASTE
FMFT-1	Water Closet - floor mount, flush tank.	American Standard model 2898.012 Cadet Elongated, floor mount elongated siphon action toilet, 1.6 gallons/flush, close coupled tank with tank cover locking device, white vitreous china. SEAT: Church 9500SSC elongated open front, self-sustaining check hinge, white. SUPPLIES: Speedway 1900 series chrome-plated brass angle stop with compression fittings, length and size of pre-fabricated flexible riser to match fixture specified. Provide Lock-Shield loose-key stop. ACCESSORIES: Trip lever, water volume regulator, float valve.	Floor	1/2"	--	3"
FMFT-2	ADA Water Closet - floor mount, flush tank.	American Standard model 2998.012 Cadet ADA 16-1/2" ADA floor mount elongated siphon action toilet, 1.6 gallons/flush, close coupled tank with tank cover locking device, white vitreous china. SEAT: Church 9500SSC elongated open front, self-sustaining check hinge, white. SUPPLIES: Speedway 1900 series chrome-plated brass angle stop with compression fittings, length and size of pre-fabricated flexible riser to match fixture specified. Provide Lock-Shield loose-key stop. ACCESSORIES: Trip lever, water volume regulator, float valve.	Floor	1/2"	--	3"

- Once placed in GCP, double click bring the data back in TT for editing.
- The table is a group object. You can select and move or resize the single object
- MG to change color, EX to get lines and text.
- While placing, use Alt+scroll wheel to adjust the size.